



Copy - Print - Scan - Fax

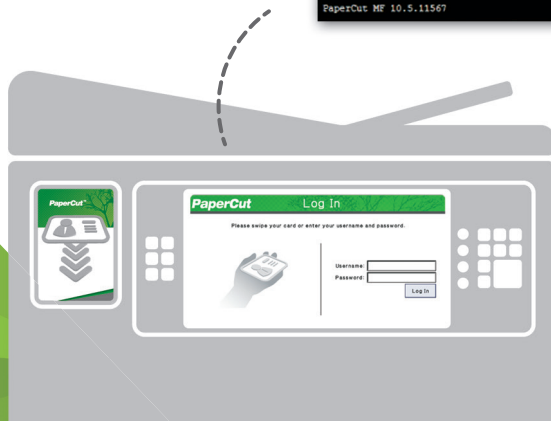
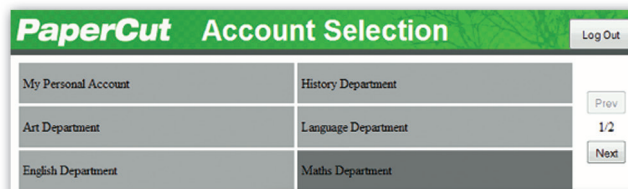
PaperCutMF is a simple low cost application that allows reporting and management of user's activity on Printers and Multifunction Devices (MFPs).

Eliminate waste, encourage responsible behavior, and make users and departments accountable for their usage.

PaperCut MF includes embedded software that runs on your copier/MFD to enable tracking, control and secure print release directly from the device's panel.

PaperCut MF is easily configured and is suitable for sites of any size regardless of environment, platform or MFD/printer make and model. PaperCut's solutions are currently in use in over 50,000 sites worldwide and translated into 25 languages, making PaperCut MF a product you can both trust and easily afford.

- Track all MFDs / Printers
- Secure Print Release
- Control and Report Use
- Recover Costs
- Enforce Print Policy
- Minimize Waste
- Web Print
- BYOD printing
- iOS printing



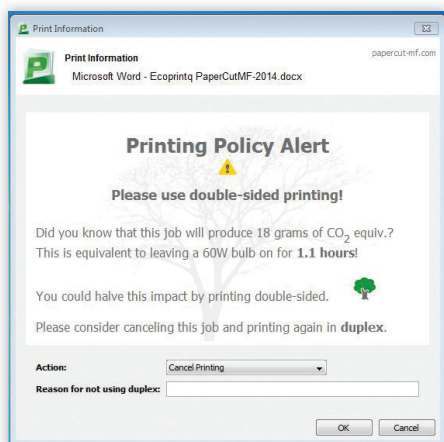
Why PaperCut MF?

Intuitive and Easy to Use

PaperCut MF is regarded as the simplest system of its type to deploy and manage. System administrators have full access to administration and configuration via a familiar web interface.

It offers:

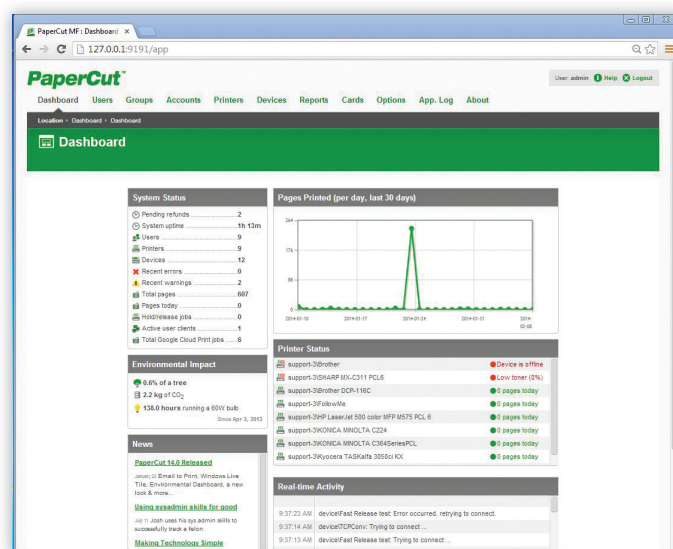
- User directory (i.e., Active Directory and others) integration and automatic user account creation
- Secure print release and Find-Me printing
- Administrator dashboard with real-time status updates
- Web Print: Driverless printing for wireless devices
- Optional client and account billing
- Ability to encourage responsible use via popup notifications



Web Based Administration

PaperCut MF provides “out of the box” browser-based administration access from any network location enabling centralized management of every user and device. Web technologies make cross-platform support easy as there is no need for additional software to be installed and no web server configuration.

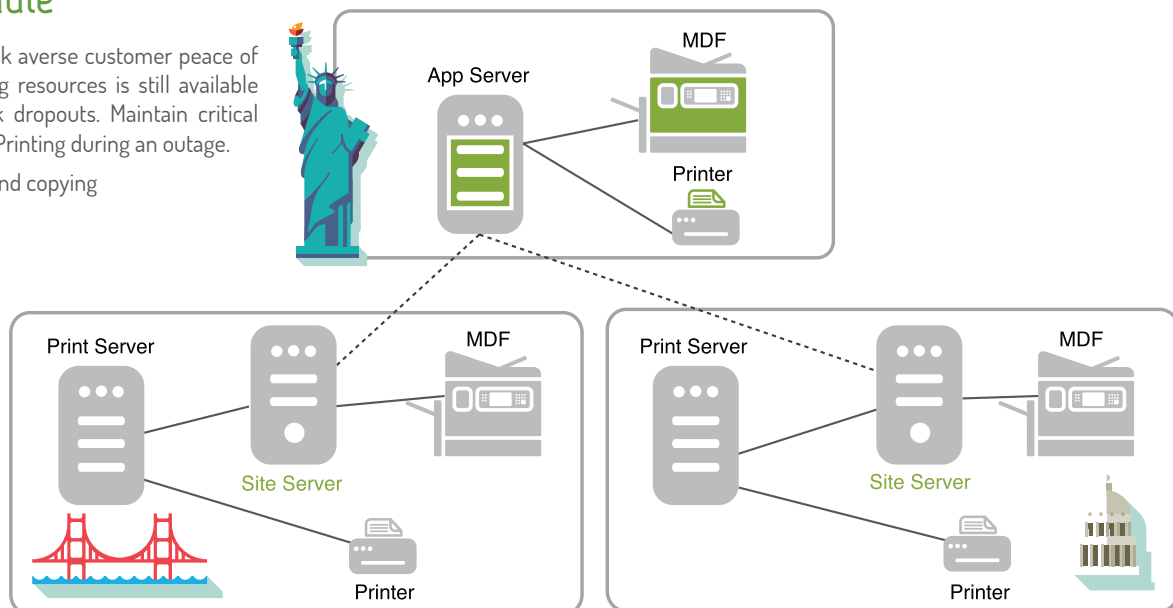
A key feature of the administration interface is the dashboard tab – an easy-to-read single page view of the printing environment for administrators. The dashboard page utilizes a number of gadgets to present key real-time information, such as, system activity and status updates; including trend information and statistics from past activity.



Site Server Module

The Site Server gives the risk averse customer peace of mind that access to printing resources is still available during unexpected network dropouts. Maintain critical services of MFD access and Printing during an outage.

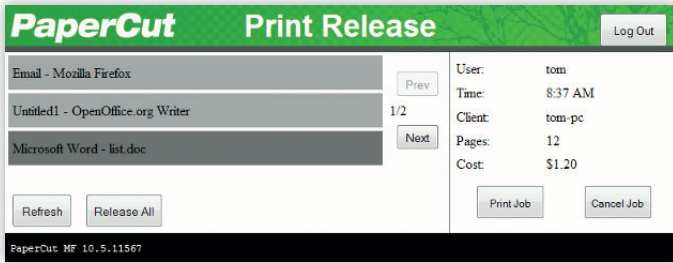
- High availability printing and copying
- Transactions are recorded



Secure Print Release

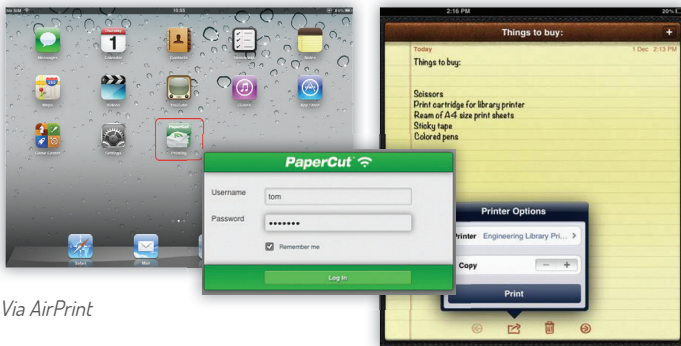
PaperCut's Find-Me printing feature enables users to print to a global virtual queue. Jobs are paused and only printed when the user releases the job at any compatible MFD/prINTER:

- Improved document security and convenience.
- Reduce IT administrators needed to manage multiple print drivers and queues for both workstations and notebooks.
- Find-Me printing minimizes waste and has been shown to reduce printing output by up to 20% in busy office environments.
- Support for multiple release methods ranging from auto release on authentication to active release job-by-job.



End users can view and manage held print jobs at the MFD

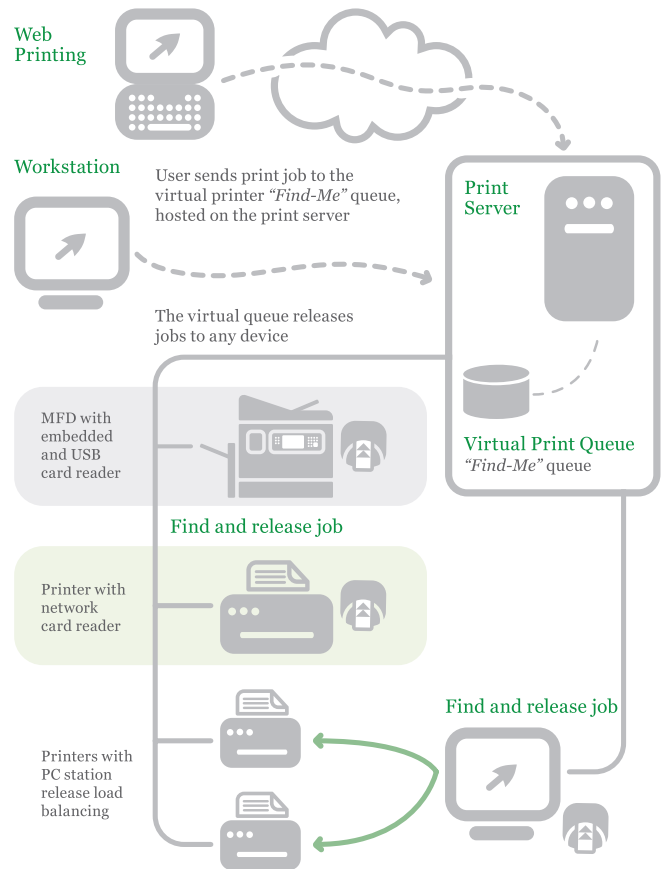
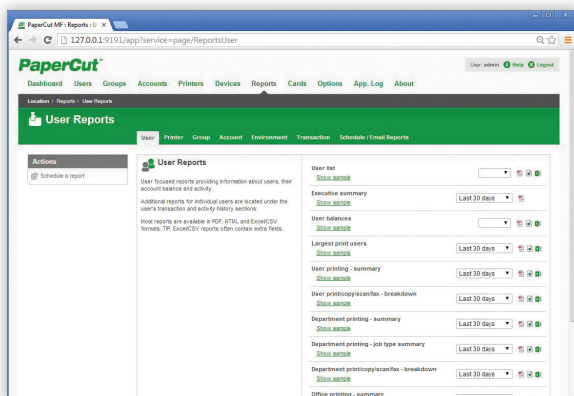
iPhone & iPad Printing



Via AirPrint

Detailed Reporting

PaperCut includes over 50 one-click reports available for online viewing, printing or export. Reports address all areas ranging from detailed page logs to summaries by user, department, device or environmental impact. Administrators can create ad-hoc reports by applying filter conditions and reports can be emailed to specified people on a regular schedule.

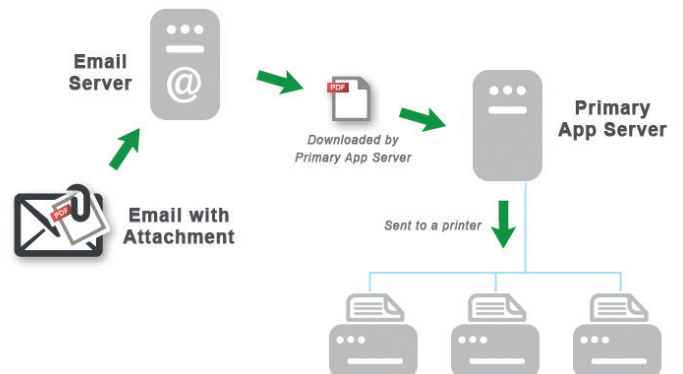


A global print queue provides convenience for end users and helps keep documents secure

Driverless Web Printing

Web Print has the potential to enable wireless and driverless printing from any mobile device, including laptops and netbooks. Combined with PaperCut's Find-Me printing feature, users can securely release their job from any supporting MFD/Printer. Web Print is simple to deploy and use and is fully integrated into PaperCut's standard print charging.

Print to Email



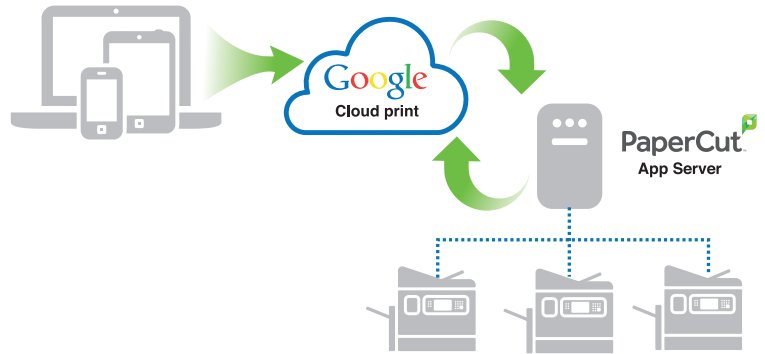
How does it Work?

- Each printer has a unique email alias.
- Users compose an email, attach their PDF document and email it to the printer's address.
- PaperCut receives the email and prints the document(s) on behalf of the user.

Google Cloud Print

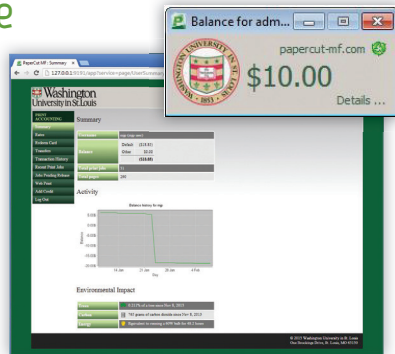
How it Works:

1. PaperCut publishes selected printers to Google Cloud Print, making them available to Google Cloud Print user applications.
2. A mobile or desktop user prints a document or email using Google Cloud Print and selects a published printer.
3. PaperCut is notified and downloads the print job from the cloud authenticating the print job with the Gmail Account.



User Web Interface

End users have access to a set of web tools to track their own activity in real-time, query their account balances, and view their transactions – without the need for intervention from administrators. The end user interface is fully customizable, so you can design a look and feel to match your website or intranet pages.



Powerful Job Scripting

Advanced scripting can be used to define and finely tune your printing policy, and support your Organization in eliminating waste and changing user behavior.

With PaperCut you can:

- Automatically route large jobs to detected high volume printers
- Discourage printing of emails via popup print policy warnings
- Encourage double sided printing
- Discourage or disable color printing by user group
- Least cost routing (suggest more cost effective devices based on conditions) Allow free printing (e.g., during class times)
- Define action by job attribute, user / group, period of day, device feature / type



See environmental impact at a glance with the Paper-Less Alliance widget

Technical Specifications

Scalability:

- Suitable for networks of 5 to 500,000+ users

Architecture:

- Single server or multi-server environments
- Monitor locally attached printers
- Client software is optional
- Available in 20+ languages and currency formats world-wide

Licensing:

- Enterprise-wide license: unlimited printers, servers, and workstations
- Licensed based on number of end users, plus a per-device
- License for MFD's running embedded software
- Premium Upgrades Assurance included for first 12 months

Open Systems:

- Open documented database scheme
- XML Web Services API with sample code

Supported Server

Operating Systems:

- Microsoft Windows Server (any edition including 64-bit and server core)
- Mac OS X Server (10.4 or higher)
- Linux (any modern distribution)
- Novell OES Linux and iPrint

Supported User

Directory Services:

- Active Directory (native integration including nested groups and OUs)
- OpenDirectory
- eDirectory
- LDAP
- NIS, PAM, Samba, and others

Supported Workstation

Operating Systems:

- Microsoft Windows (any edition)
- Mac OS X (10.4 or higher)
- Linux (any modern distribution)
- Unix Workstation (Java required to run client software)

MFDs/Printers:

- Almost all major digital laser, inkjet and wide format devices supported
- Supported print languages: PCL, PCL6, HPGL, Postscript, PCL-GUI, XPS, Ricoh RPCS, Epson ESC, QPDL, various GDI printers and many language that don't even have names

Supported Database Servers:

- Self-managing internal database: suitable for up to 5,000 end users
- Microsoft SQL Server 2000/2005 /2008/2012 (either 32 or 64 bit)
- Microsoft SQL Express 2005/2008/2012 (free from Microsoft)
- PostgreSQL 7.1 or higher
- MySQL 5.0 or higher
- Oracle 9.2 or higher

Supported Cluster

Environments:

- Microsoft Failover Server
- Microsoft Cluster Server
- Veritas Cluster Server
- Linux HA

Encryption:

- SSL encryption used for sensitive client server communication



Environmentally friendly - conserve a tree and its ecological habitat

Please contact your authorized sales representative